

vtech[®]

Instruction Manual

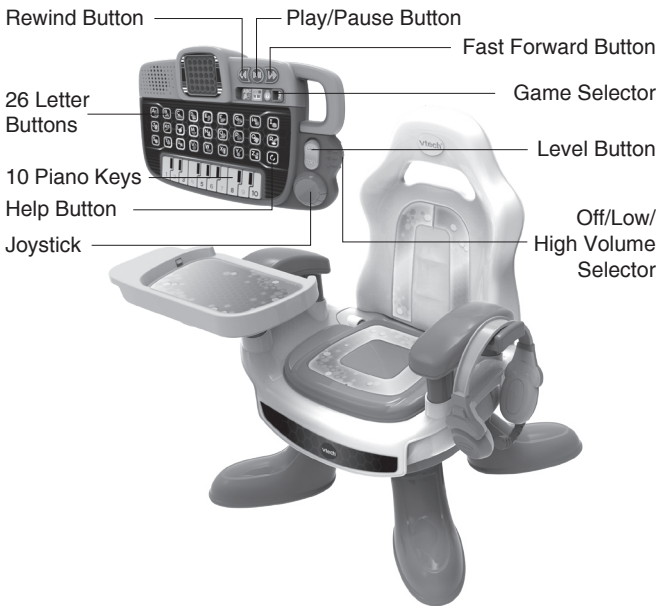
Level Up Gaming Chair™



INTRODUCTION

Thank you for purchasing the **Level Up Gaming Chair™**.

Let little ones “game” just like their favorite adults with this versatile chair. Encourage kids to be major-league learners with a removable learning panel that teaches letters, numbers, words and music. You can also play the piano to create your own songs. Enjoy role play fun with a swivel chair, game-action joystick and pretend headphones. Let’s level up and learn!

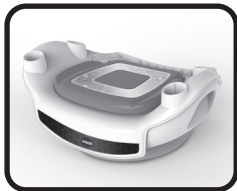


INCLUDED IN THE PACKAGE

- Level Up Gaming Chair™
- Backrest



- Seat



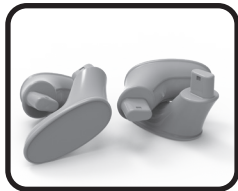
- Tray



- Armrest



- 4 legs



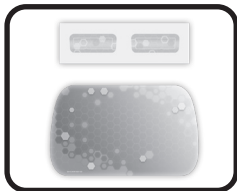
- Removable gamer tablet



- Pretend headphones



- 2 labels



- Quick Start Guide

WARNING

All packing materials such as tape, plastic sheets, packaging locks, removable tags, cable ties, cords and packaging screws are not part of this toy, and should be discarded for your child's safety.

NOTE

Please save this Instruction Manual as it contains important information.

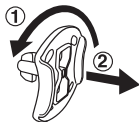
ATTENTION

Pour la sécurité de votre enfant, débarrassez-vous de tous les produits d'emballage tels que rubans adhésifs, feuilles de plastique, attaches, étiquettes, cordons et vis d'emballage. Ils ne font pas partie du jouet.

NOTE

Il est conseillé de sauvegarder ce manuel d'instructions car il comporte des informations importantes.

Unlock the Packaging Locks

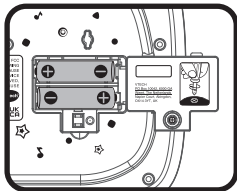
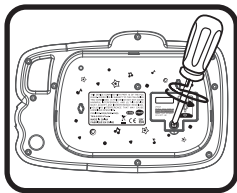


- ① Rotate the packaging locks counterclockwise 90 degrees.
- ② Pull out the packaging locks and discard.

GETTING STARTED

Battery Removal and Installation

1. Make sure the unit is turned **Off**.
2. Find the battery cover located on the bottom of the unit, use a screwdriver to loosen the screw and then open the battery cover.
3. Remove old batteries by pulling up on one end of each battery.
4. Install 2 new AA (AM-3/LR6) batteries following the diagram inside the battery box. (For best performance, alkaline batteries or fully charged Ni-MH rechargeable batteries are recommended.)
5. Replace the battery cover and tighten the screw to secure.



WARNING:

Adult assembly required for battery installation.
Keep batteries out of reach of children.



ATTENTION :

Les piles ou accumulateurs doivent être installés par un adulte.
Tenir les piles ou accumulateurs hors de portée des enfants.

IMPORTANT: BATTERY INFORMATION

- Insert batteries with the correct polarity (+ and -).
- Do not mix old and new batteries.
- Do not mix alkaline, standard (carbon-zinc) or rechargeable batteries.
- Only batteries of the same or equivalent type as recommended are to be used.
- Do not short-circuit the supply terminals.
- Remove batteries during long periods of non-use.
- Remove exhausted batteries from the toy.
- Dispose of batteries safely. Do not dispose of batteries in fire.

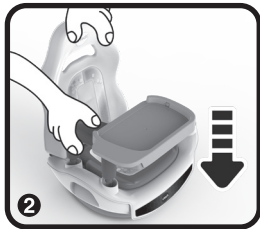
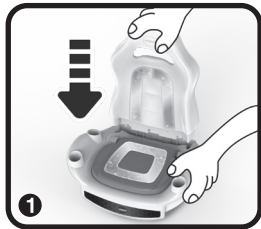
RECHARGEABLE BATTERIES

- Remove rechargeable batteries (if removable) from the toy before charging.
- Rechargeable batteries are only to be charged under adult supervision.
- Do not charge non-rechargeable batteries.

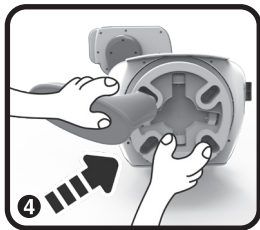
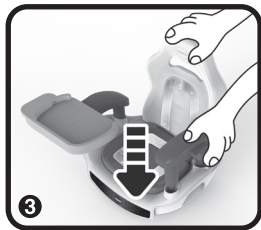
ASSEMBLY INSTRUCTIONS

With the **Level Up Gaming Chair™**, safety comes first. Adult assembly required. For your child's safety, do not let them play with this toy until it is fully assembled.

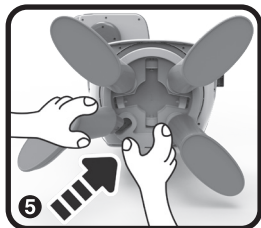
1. Align the bottom of the back with the slots of the seat. Insert the back into the slots and press it down firmly and tightly.
2. Align the bottom of the tray with the slots of the seat, insert the tray into the slots and press it down firmly and tightly.



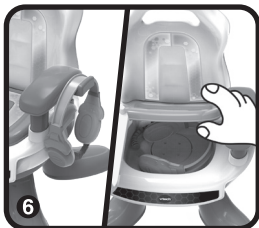
3. Align the bottom of the the armrest with the slots of the seat, insert the armrest into the slots and press it down firmly and tightly.
4. Align one of the legs of the chair with the slots of the seat, insert the leg into the slot and press it down firmly and tightly.



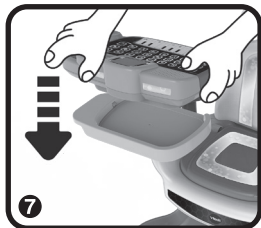
5. Align the other legs of the chair with the slots of the seat, insert the legs into the slots and press them down firmly and tightly.



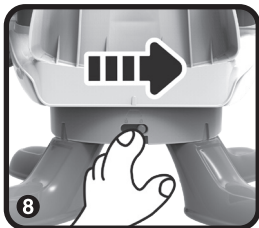
6. Hang the headphone on the armrest or lift the seat and store the headphones under of the seat.



7. Place the learning panel on the tray.



8. Move the lock slider to the right side to lock the seat.



LABEL APPLICATION

Please securely stick the labels to the toy as indicated below:



①



②



①

②



③



③

PRODUCT FEATURES

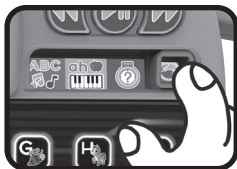
1. Off/Low/High Volume Selector

To turn the unit **On** or adjust the volume, slide the **Off/Low/High Volume Selector** to Low or High. To turn the unit **Off**, slide the selector to **Off**.



2. Game Selector

Slide the **Game Selector** to choose from four activities.



3. 26 Letter Buttons

Press the **Letter Buttons** to learn about letters, objects or animals, to listen to sing-along songs or to answer the activity questions.



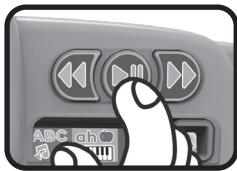
4. 10 Piano Keys

Press the **Piano Keys** to play the piano, learn about numbers, listen to sing-along songs, or to answer the activity questions.



5. Music Player

Press the music **Play/Pause Button** to hear video game-inspired melodies and see the lights flash to the music. Press the **Rewind Button** to go to the previous melody. Press the **Play/Pause Button** to play or pause the music and press the **Fast Forward Button** to go to the next melody.



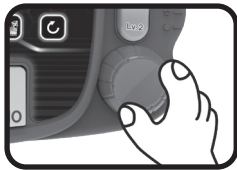
6. Help Button

Press the **Help Button** to repeat the current question or get a helpful hint.



7. Joystick

Move the **Joystick** to listen to classic video game sounds.



8. Level Button

Press the **Level Button** to switch between levels one and two. Levels can be changed for each of the four games.

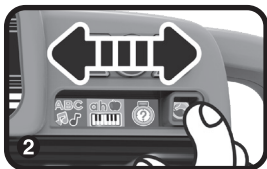
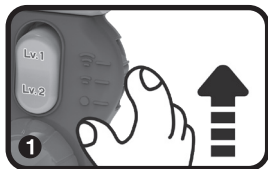


9. Automatic Shut-Off

To preserve battery life, the **Level Up Gaming Chair™** will automatically shut off after several minutes without input. The unit can be turned on again by sliding the **Off/Low/High Volume Selector**, or by pressing any Music Player Buttons.

TO BEGIN PLAY

Move the **Off/Low/High Volume Selector** to Low or High position to turn on the unit, then move the **Game Selector** to select a game to play.



ACTIVITIES

1. Music Games

Move the **Game Selector** to the first position to play music games. Press the **Letter Buttons** or **Piano Keys** to listen to sing-along songs about letters, phonics, words, numbers and counting.

2. Piano Phonics

Move the **Game Selector** to the second position to enter this activity. Press the **Letter Buttons** to learn letters, phonics or words. Press the **Piano Keys** to free play the piano or play a melody note-by-note.

3. Ultimate Challenge

Move the **Game Selector** to the third position to enter this activity. Press the **Letter Buttons** and **Piano Keys** to answer the questions.

4. Word Quest

Move the **Game Selector** to the fourth position to enter this activity. Press the **Letter Buttons** or **Piano Keys** to learn about words and the categories they belong to, odd and even numbers and to answer the questions.

CARE & MAINTENANCE

1. Keep the unit clean by wiping it with a slightly damp cloth.
2. Keep the unit out of direct sunlight and away from any direct heat sources.
3. Remove the batteries if the unit will not be in use for an extended period of time.
4. Do not drop the unit on hard surfaces and do not expose the unit to moisture or water.

TROUBLESHOOTING

If for some reason the unit stops working or malfunctions, please follow these steps:

1. Turn the unit **Off**.
2. Interrupt the power supply by removing the batteries.
3. Let the unit stand for a few minutes, then replace the batteries.
4. Turn the unit **On**. The unit should now be ready to use again.
5. If the unit still does not work, install a new set of batteries.

IMPORTANT NOTE:

If the problem persists, please call our **Consumer Services Department** at **1-800-521-2010** in the U.S. or **1-877-352-8697** in Canada, or by going to our website at **vtechkids.com** and filling out our **Contact Us** form located under the **Customer Support** link. Creating and developing **VTech®** products is accompanied by a responsibility that we take very seriously. We make every effort to ensure the accuracy of the information, which forms the value of our products. However, errors sometimes can occur. It is important for you to know that we stand behind our products and encourage you to contact us with any problems and/or suggestions that you might have. A service representative will be happy to help you.

NOTE

This equipment has been tested and found to comply with the limits for a Class B digital device, pursuant to Part 15 of the FCC Rules. These limits are designed to provide reasonable protection against harmful interference in a residential installation. This equipment generates, uses and can radiate radio frequency energy and, if not installed and used in accordance with the instructions, may cause harmful interference to radio communications. However, there is no guarantee that interference will not occur in a particular installation. If this equipment does cause harmful interference to radio or television reception, which can be determined by turning the equipment off and on, the user is encouraged to try to correct the interference by one or more of the following measures:

- Reorient or relocate the receiving antenna.
- Increase the separation between the equipment and receiver.
- Connect the equipment into an outlet on a circuit different from that to which the receiver is connected.
- Consult the dealer or an experienced radio/TV technician for help.

CAUTION

Changes or modifications not expressly approved by the party responsible for compliance could void the user's authority to operate the equipment.

Supplier's Declaration of Conformity 47 CFR § 2.1077 Compliance Information

Trade Name: VTech®
Model: 5192
Product Name: Level Up Gaming Chair™
Responsible Party: VTech Electronics North America, L.L.C.
Address: 1156 W. Shure Drive, Suite 200
Arlington Heights, IL 60004
Website: vtechkids.com

THIS DEVICE COMPLIES WITH PART 15 OF THE FCC RULES. OPERATION IS SUBJECT TO THE FOLLOWING TWO CONDITIONS: (1) THIS DEVICE MAY NOT CAUSE HARMFUL INTERFERENCE, AND (2) THIS DEVICE MUST ACCEPT ANY INTERFERENCE RECEIVED, INCLUDING INTERFERENCE THAT MAY CAUSE UNDESIRE OPERATION.

CAN ICES-003(B)/NMB-003(B)

**Visit our website for more
information about our products,
downloads, resources and more.**

vtechkids.com
vtechkids.ca

Read our complete warranty policy online at
vtechkids.com/warranty
vtechkids.ca/warranty

